

Audiocenter

Dynamic Audio Solutions

Technology for Music & Arts
Designed & Engineered in Europe

BrainCore™
Technology Inside

www.audiocenter.com

Together we are stronger



SA3+ Series

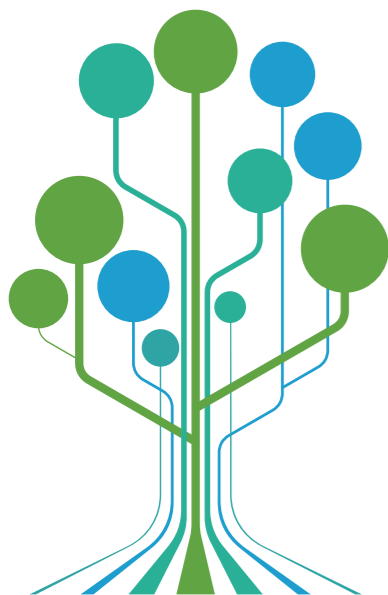
Active DSP-controlled Loudspeaker

The SA3+ Series active DSP controlled loudspeakers, upgraded version from SA3, are the latest high-performance, cost-effective products introduced by Audiocenter. SA3+ is built with BrainCore™ technology, which analyses and processes the input signal, DSP module, and Class D amplifier optimally, improving the audio performance of the system significantly.

SA3+ is built with TFT display for visual control. By rotating the encoder on the back panel, users can easily access the DSP settings interface on the display screen to adjust various audio parameters.

Built-in wireless bluetooth makes various bluetooth devices can be linked to SA3+ easily and get the audio output.





BrainCore™

BrainCore™ is an innovative core application technology researched and developed by Audiocenter, devoted to Audiocenter active DSP-controlled loudspeakers with supreme performance and high reliability.

With its advanced technology and scientific methodology, BrainCore™ analyses and processes the input signal, DSP module, Class D amplifier and loudspeaker optimally, achieving excellent frequency response and audio reproduction even at high levels of SPL.

IMPORTANT FEATURES



Innovative BrainCore™ technology to improve the audio performance of the system

The innovative BrainCore™ technology and built-in powerful DSP processor improve the performance of the speaker. With Cort™ correction technology and Limita™ processing technology, the system works with safety and reliability and achieves supreme performance.



High-efficiency Class D Amplifier Module

The high-efficiency amplifier module can provide the highest sound output power among similar products. A single module has a peak power of up to 2000W and can provide excellent dynamic and transient response, greatly improving the audio performance of the speakers.



Visual DSP Settings

By rotating the encoder on the back panel, users can easily access the DSP settings interface on the display screen to adjust various audio parameters.



Built-in Bluetooth 5.0 Chip

Equipped with a Bluetooth 5.0 chip, it offers a more stable and efficient wireless audio transmission experience, ensuring stable and reliable transmission.



Advanced Cooling System

Moulded large heatsink improves cooling, resulting in higher reliability.



4 Presets

Tailored to diverse user preferences, the SA3+ features DSP presets accessible via the TFT display.



Customized ProDriver

Latest driver technology and customized drivers ensure a clean sound and impressive dynamics.



Unique Horn Design

The exclusive design of each and every SA3+ series horn has been developed by our R&D team using Finite Element Analysis (FEA) and the Boundary Element Method (BEM), delivering unparalleled audio performance and craftsmanship.



Solid Wood Cabinet

Optimized and compact cabinet structure design, using high-quality CNC cabinet, strong and moisture-proof, suitable for mobile applications.

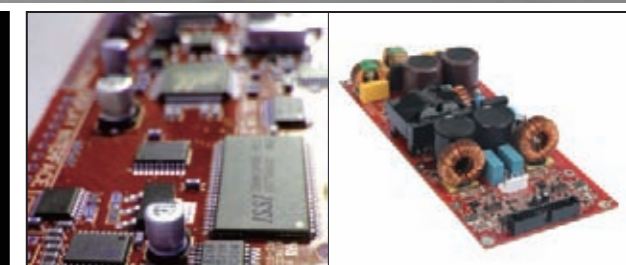
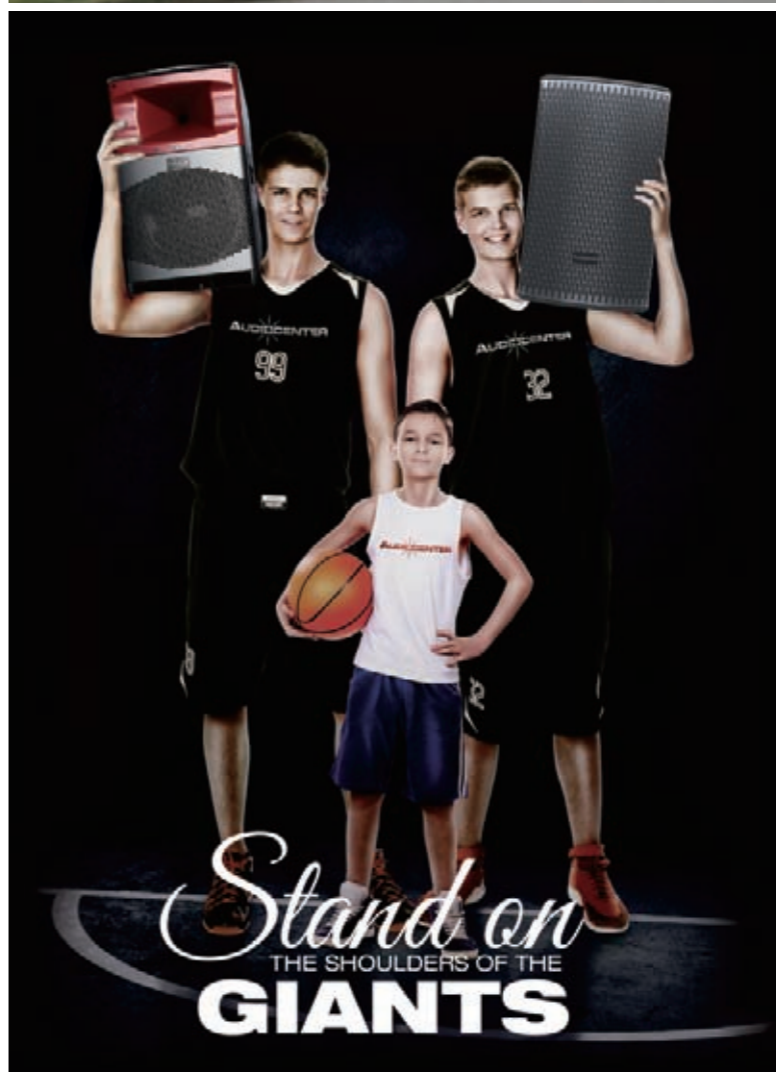


Durable Polyurea Coating

The polyurea coating is waterproof, wear resistance, impact resistance and aging resistance.

European R&D design, German standard engineering

The power amplifier module and DSP module were designed by Audiocenter's R&D team in Europe and manufactured according to German standard engineering. The system operates stably and efficiently, ensuring high-quality audio output.

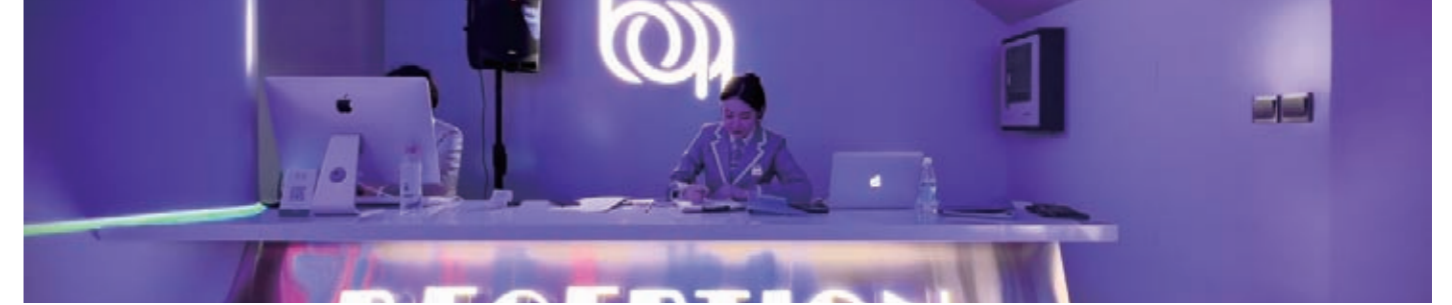
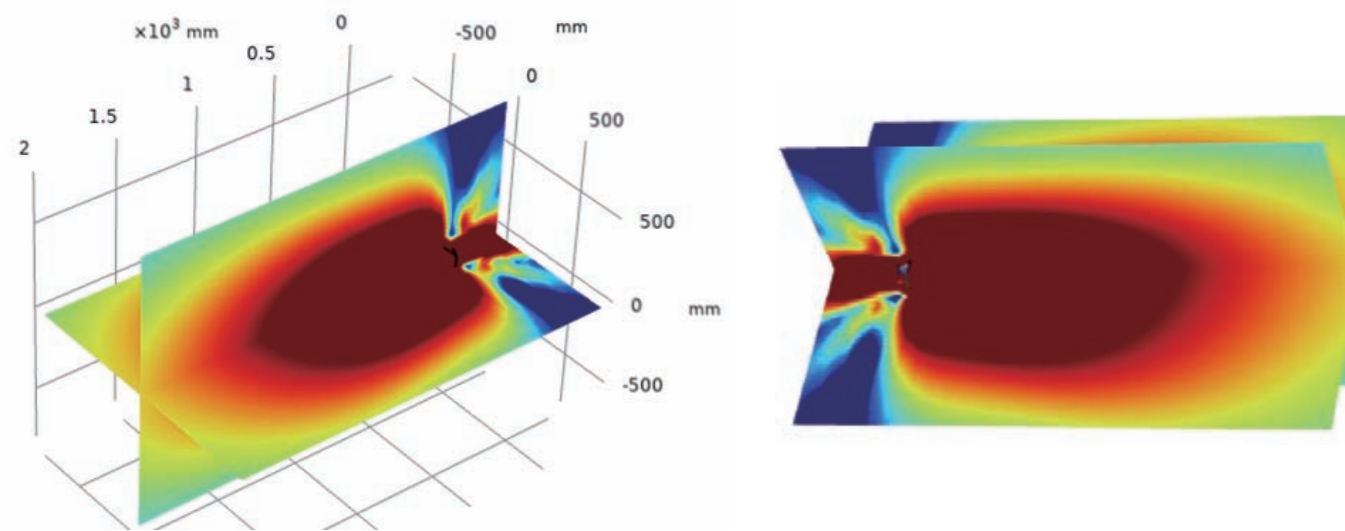


- High reliability**
 The power amplifier modules and DSP modules used in SA3+ have been sold over 500,000 units worldwide and have proven to be of very stable and reliable quality.
- High-efficiency Class D Amplifier Module**
 The high-efficiency amplifier module can provide the highest sound output power among similar products. A single module has a peak power of up to 2000W and can provide excellent dynamic and transient response, greatly improving the audio performance of the speakers.
- Modular Power Amplifier Module**
 The modular power amplifier module adopts a sturdy mechanical structure, which can better protect the power amplifier. The tunnel-type heat dissipation also provides optimal heat dissipation efficiency (The maximum temperature rise is 30°).

Unique Horn Design

The exclusive design of each and every SA3+ series horn has been developed by our R&D team using Finite Element Analysis (FEA) and the Boundary Element Method (BEM), delivering unparalleled audio performance and craftsmanship.

Our design is completely focused on getting perfect coverage for as wide frequency-range as possible without sacrificing frequency response transparency and minimizing harmonic distortion.

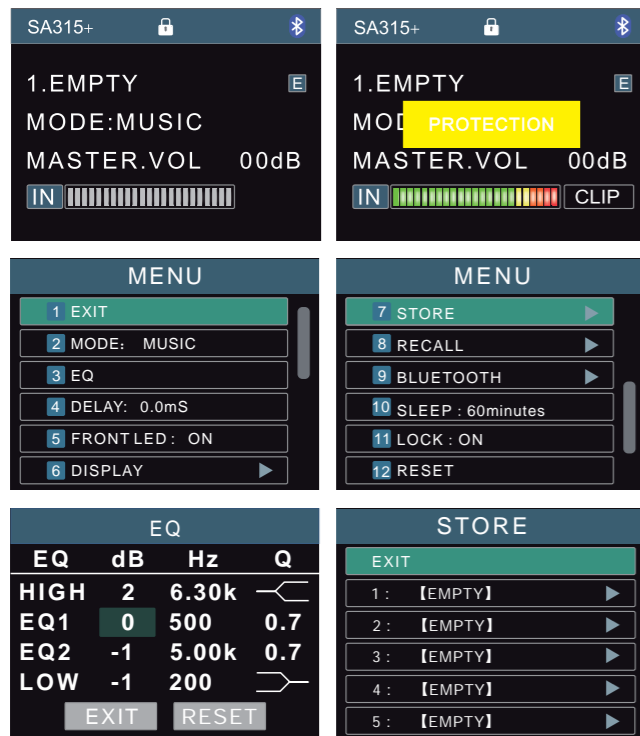
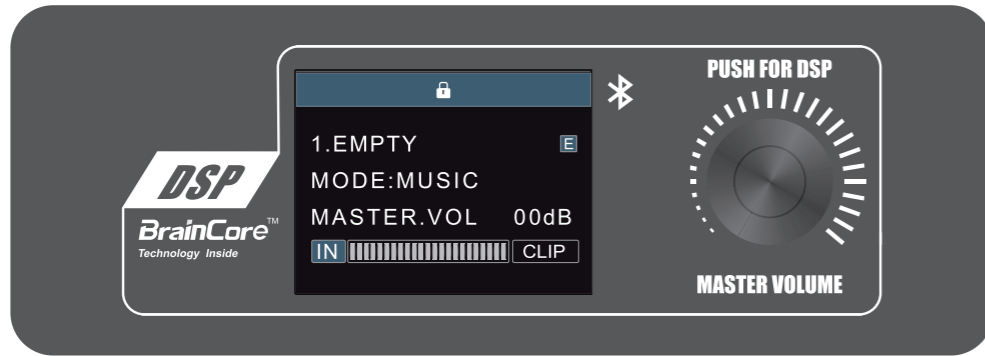


Function Introduction of Rear Panel



- | | |
|----------------------------------|-------------------------------------|
| 1 2-inch TFT Display | 7 OUTPUT LINE B/MIX Switch |
| 2 DSP/MASTER Volume Control Knob | 8 INPUT Combo (LINE A/ MIC) |
| 3 CH A Gain Control Knob | 9 INPUT Combo (LINE B) |
| 4 CH B Gain Control Knob | 10 OUTPUT Male XLR (LINE B/MIX OUT) |
| 5 INPUT Jack (AUX) | 11 POWER Switch |
| 6 INPUT LINE A/MIC Switch | 12 IEC Power Connector |

Function Introduction of TFT Display



HD Display

The speaker is equipped with a 240 (H) x 320 (V) pixel TFT display, providing clear image display.

Easy Operation

By rotating the encoder on the back panel, users can easily access the DSP settings interface.

Bluetooth 5.0 with TWS Pairing

Supports Bluetooth connection with TWS (True Wireless Stereo) functionality, allowing users to achieve stereo wireless pairing.

Presets Available

The DSP has built-in multiple presets, catering to diverse applications.

Personalized Audio Adjustment

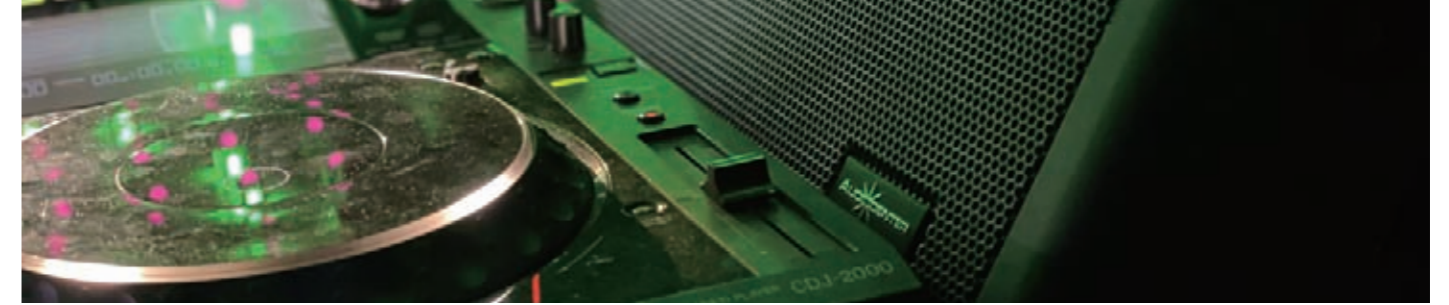
Users can easily adjust the EQ, delay, and gain to tailor the sound to their personal preferences. Once adjusted, settings can be saved for convenient recall the next time they're needed.

Signal LED Control

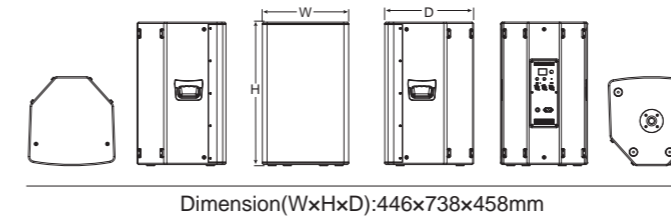
Users can set the front signal LED to turn on or off via the display screen interface.

Sleep Mode

Users can easily set the product's sleep mode through a simple operating interface.



SA315+



Dimension(WxHxD):446x738x458mm

Product Profile

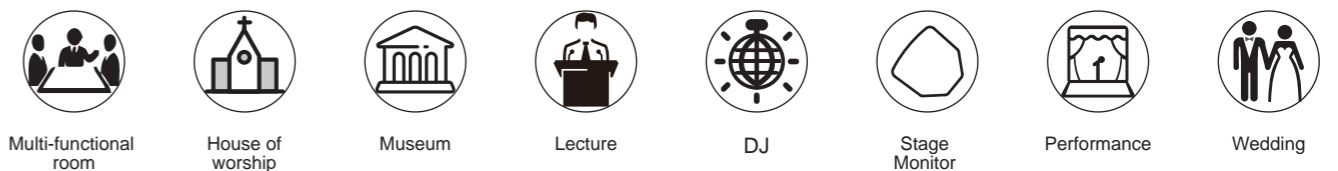
The SA315+ speaker is a versatile all-in-one solution, supporting both XLR and 6.35mm jack inputs for microphone and line-level balanced signals, as well as featuring an AUX input and wireless Bluetooth connectivity for easy hookup with various portable audio sources. Independent gain control and master volume adjustment allow users to tweak the sound quality with ease. The internal mixing and balanced output design are perfect for setting up multi-speaker systems.

SA315+ offers flexible installation options, with both ceiling suspension and pole mount, adapting to various environments. With its exceptional sound quality and user-friendly operations, the SA315+ meets the demands of both professional and home users for a high-quality audio experience.

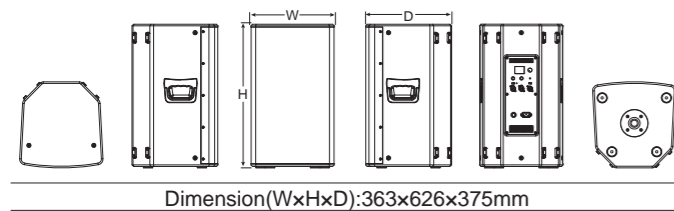
SPECIFICATION

Type	Active DSP-controlled full range loudspeaker
Frequency Response(-10dB)	36Hz-20kHz
Horizontal Coverage	80°
Vertical Coverage	50°
Maximum Calculated SPL/1M(Continuous/Peak)	128dB/134dB
HF Driver	Customized driver, 1.75" voice coil, 1.0" exit
LF Driver	Customized 15" driver, 3.0" voice coil
DSP	
Processor	48kHz signal sampling frequency
Presets	MUSIC, FLAT, SPEECH, W/SUB
AMPLIFIER	
Amplifier Circuitry	Class D
Power (RMS standards)	1000W
Peak Power	2000W
Frequency Response (1W 8Ω 2ch)	20Hz-20kHz(±0.5dB)
Intermodulation Distortion	<0.05%
Total Harmonic Distortion	<0.05%
Cooling System	Cooling with fans, air convection
Protection	DC protection, short circuit protection, overheat protection, input overload protection, output overload protection, soft startup protection, overvoltage protection, undervoltage protection
Signal Input	Female XLR(Mono jack 6.35), 3.5mm Jack Input, Wireless bluetooth
Signal Output	Male XLR Balanced Output
Power Input	IEC power connector
AC Power Operating Range	100-240V~ (±10%,50/60Hz)
Power consumption (1/8 output power)	64W
CABINET	
Cabinet Material	CNC machined plywood
Coating	Durable Polyurea Coating
Cabinet Color	Black is the default color. Contact Audiocenter for customization
Grille	Iron mesh
Handles	2 side
Monitor Angle	Symmetrical 45° monitoring Angle
Hanging Hardwares	M8 screw
Pole Mount	Base hole Φ35mm
Speaker Dimension (WxHxD)	446x738x458mm
Carton Dimension (WxHxD)	518x805x531mm
Net Weight	24.0 kg
Shipping Weight	27.5 kg

Suggested Application



SA312+



Product Profile

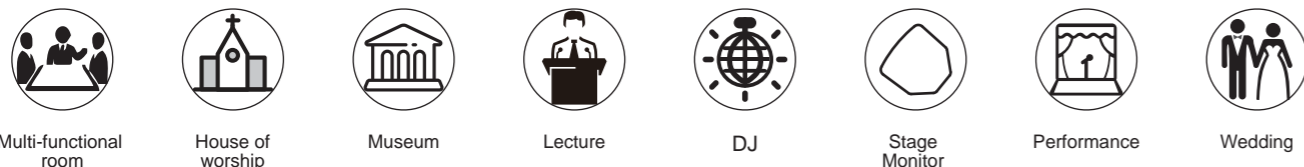
The SA312+ speaker is a versatile all-in-one solution, supporting both XLR and 6.35mm jack inputs for microphone and line-level balanced signals, as well as featuring an AUX input and wireless Bluetooth connectivity for easy hookup with various portable audio sources. Independent gain control and master volume adjustment allow users to tweak the sound quality with ease. The internal mixing and balanced output design are perfect for setting up multi-speaker systems.

SA312+ offers flexible installation options, with both ceiling suspension and pole mount, adapting to various environments. With its exceptional sound quality and user-friendly operations, the SA312+ meets the demands of both professional and home users for a high-quality audio experience.

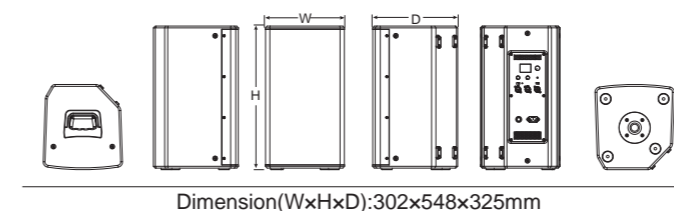
SPECIFICATION

Type	Active DSP-controlled full range loudspeaker
Frequency Response(-10dB)	46Hz-20kHz
Horizontal Coverage	80°
Vertical Coverage	50°
Maximum Calculated SPL/1M(Continuous/Peak)	126dB/132dB
HF Driver	Customized driver,1.75" voice coil, 1.0" exit
LF Driver	Customized 12" driver, 2.5" voice coil
DSP	
Processor	48kHz signal sampling frequency
Presets	MUSIC, FLAT, SPEECH, W/SUB
AMPLIFIER	
Amplifier Circuitry	Class D
Power (RMS standards)	1000W
Peak Power	2000W
Frequency Response (1W 8Ω 2ch)	20Hz-20kHz(±0.5dB)
Intermodulation Distortion	<0.05%
Total Harmonic Distortion	<0.05%
Cooling System	Cooling with fans,air convection
Protection	DC protection, short circuit protection, overheat protection, input overload protection, output overload protection, soft startup protection, overvoltage protection, undervoltage protection
Signal Input	Female XLR(Mono jack 6.35), 3.5mm Jack Input, Wireless bluetooth
Signal Output	Male XLR Balanced Output
Power Input	IEC power connector
AC Power Operating Range	100-240V~ (±10%,50/60Hz)
Power consumption (1/8 output power)	55W
CABINET	
Cabinet Material	CNC machined plywood
Coating	Durable Polyurea Coating
Cabinet Color	Black is the default color. Contact Audiocenter for customization
Grille	Iron mesh
Handles	2 side
Monitor Angle	Symmetrical 45° monitoring Angle
Hanging Hardwares	M8 screw
Pole Mount	Base hole Φ35mm
Speaker Dimension (WxHxD)	363x626x375mm
Carton Dimension (WxHxD)	435x693x448mm
Net Weight	18.0 kg
Shipping Weight	20.0 kg

Suggested Application



SA310+



Product Profile

The SA310+ speaker is a versatile all-in-one solution, supporting both XLR and 6.35mm jack inputs for microphone and line-level balanced signals, as well as featuring an AUX input and wireless Bluetooth connectivity for easy hookup with various portable audio sources. Independent gain control and master volume adjustment allow users to tweak the sound quality with ease. The internal mixing and balanced output design are perfect for setting up multi-speaker systems.

SA310+ offers flexible installation options, with both ceiling suspension and pole mount, adapting to various environments. With its exceptional sound quality and user-friendly operations, the SA310+ meets the demands of both professional and home users for a high-quality audio experience.

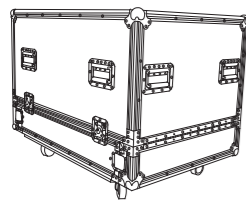
SPECIFICATION

Type	Active DSP-controlled full range loudspeaker
Frequency Response(-10dB)	52Hz-20kHz
Horizontal Coverage	80°
Vertical Coverage	50°
Maximum Calculated SPL/1M(Continuous/Peak)	124dB/130dB
HF Driver	Customized driver,1.75" voice coil, 1.0" exit
LF Driver	Customized 10" driver, 2.0" voice coil
DSP	
Processor	48kHz signal sampling frequency
Presets	MUSIC, FLAT, SPEECH, W/SUB
AMPLIFIER	
Amplifier Circuitry	Class D
Power (RMS standards)	1000W
Peak Power	2000W
Frequency Response (1W 8Ω 2ch)	20Hz-20kHz(±0.5dB)
Intermodulation Distortion	<0.05%
Total Harmonic Distortion	<0.05%
Cooling System	Cooling with fans,air convection
Protection	DC protection, short circuit protection, overheat protection, input overload protection, output overload protection, soft startup protection, overvoltage protection, undervoltage protection
Signal Input	Female XLR(Mono jack 6.35), 3.5mm Jack Input, Wireless bluetooth
Signal Output	Male XLR Balanced Output
Power Input	IEC power connector
AC Power Operating Range	100-240V~ (±10%,50/60Hz)
Power consumption (1/8 output power)	49W
CABINET	
Cabinet Material	CNC machined plywood
Coating	Durable Polyurea Coating
Cabinet Color	Black is the default color. Contact Audiocenter for customization
Grille	Iron mesh
Handles	1 top
Monitor Angle	45° monitoring Angle
Hanging Hardwares	M8 screw
Pole Mount	Base hole Φ35mm
Speaker Dimension (WxHxD)	302x548x325mm
Carton Dimension (WxHxD)	365x605x389mm
Net Weight	14.0 kg
Shipping Weight	16.0 kg

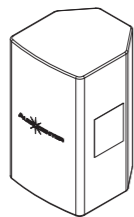
Suggested Application



ACCESSORIES



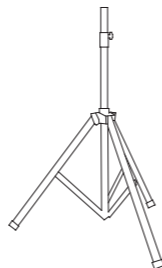
Flightcase
For 2 cabinets,
with 100mm wheels



Cover

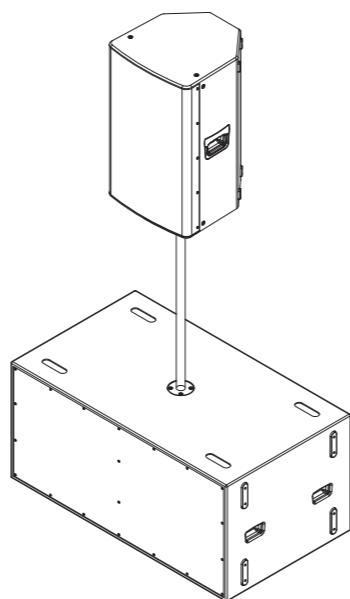
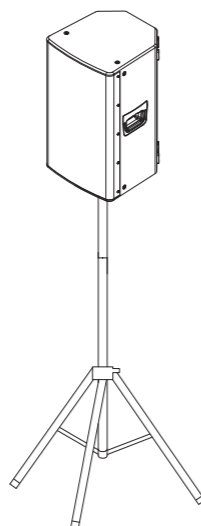
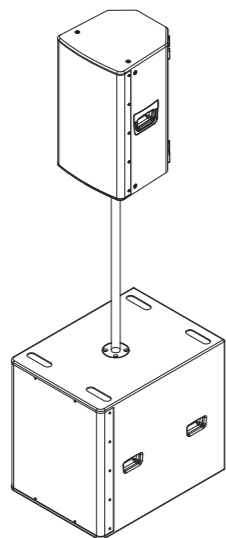
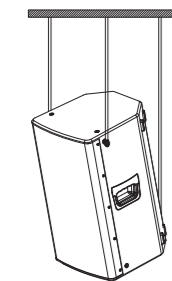


Coupling bar
Bearing 50KG



Three-foot stand
Bearing 80KG

INSTALLATIONS



SA3+ Series Specifications

SPECIFICATIONS		SA315+	SA312+	SA310+
Frequency Response(-10dB)		36Hz-20kHz	46Hz-20kHz	52Hz-20kHz
Directivity -6dB(H°xV°)		80° x 50°		
Maximum Calculated SPL/1M	Continuous	128dB	126dB	124dB
	Program	131dB	129dB	127dB
	Peak	134dB	132dB	130dB
Drivers	HF	Customized driver, 1.75" voice coil, 1.0" exit		
	LF	Customized 15" driver, 3.0" voice coil	Customized 12" driver, 2.5" voice coil	Customized 10" driver, 2.0" voice coil

DSP

Processor	48kHz signal sampling frequency
Presets	MUSIC, FLAT, SPEECH, W/SUB

AMPLIFIER

Amplifier	Class D		
Power(RMS standards)	1000W		
Peak Power	2000W		
Frequency Response(1W 8Ω 2ch)	20Hz-20kHz(±0.5dB)		
Intermodulation Distortion (20Hz-20kHz, half power)	<0.05%		
Total Harmonic Distortion (20Hz-20kHz, Rated power 8Ω)	<0.05%		
Cooling	Cooling with fans, air convection		
Protection	DC protection, Short circuit protection, Overheat protection, Output overload protection, Soft startup protection, Overvoltage protection, Undervoltage protection		
Signal Input	Female XLR(Mono jack 6.35), 3.5mm Jack Input, Wireless bluetooth		
Signal Output	Male XLR Balanced Output		
Power Input Connector	IEC power connector		
Working Voltage	100-240V~(±10%, 50/60Hz)		
Power consumption (1/8 output power)	64W	55W	49W

CABINET

Cabinet Material	CNC machined plywood		
Coating	Durable Polyurea Coating		
Cabinet Color	Black is the default color. Contact Audiocenter for customization		
Grille	Iron mesh		
Handles	2 side	1 top	
Monitor Angle	Symmetrical 45° monitoring Angle		45° monitoring Angle
Hanging Hardwares	M8 screw		
Pole Mount	Base hole Φ35mm		
Optional Accessories	Flightcase / Cover / Coupling bar / Three-foot stand		
Speaker Dimension(WxHxD)	446x738x458mm	363x626x375mm	302x548x325mm
Carton Dimensions(WxHxD)	518x805x531mm	435x693x448mm	365x605x389mm
Net Weight	24.0 kg	18.0 kg	14.0 kg
Shipping Weight	27.5 kg	20.0 kg	16.0 kg
Technical Support and After-sales Service	Global application support team		

■ All content subject to change without notice. All rights reserved. AC - SA3+ - 202409