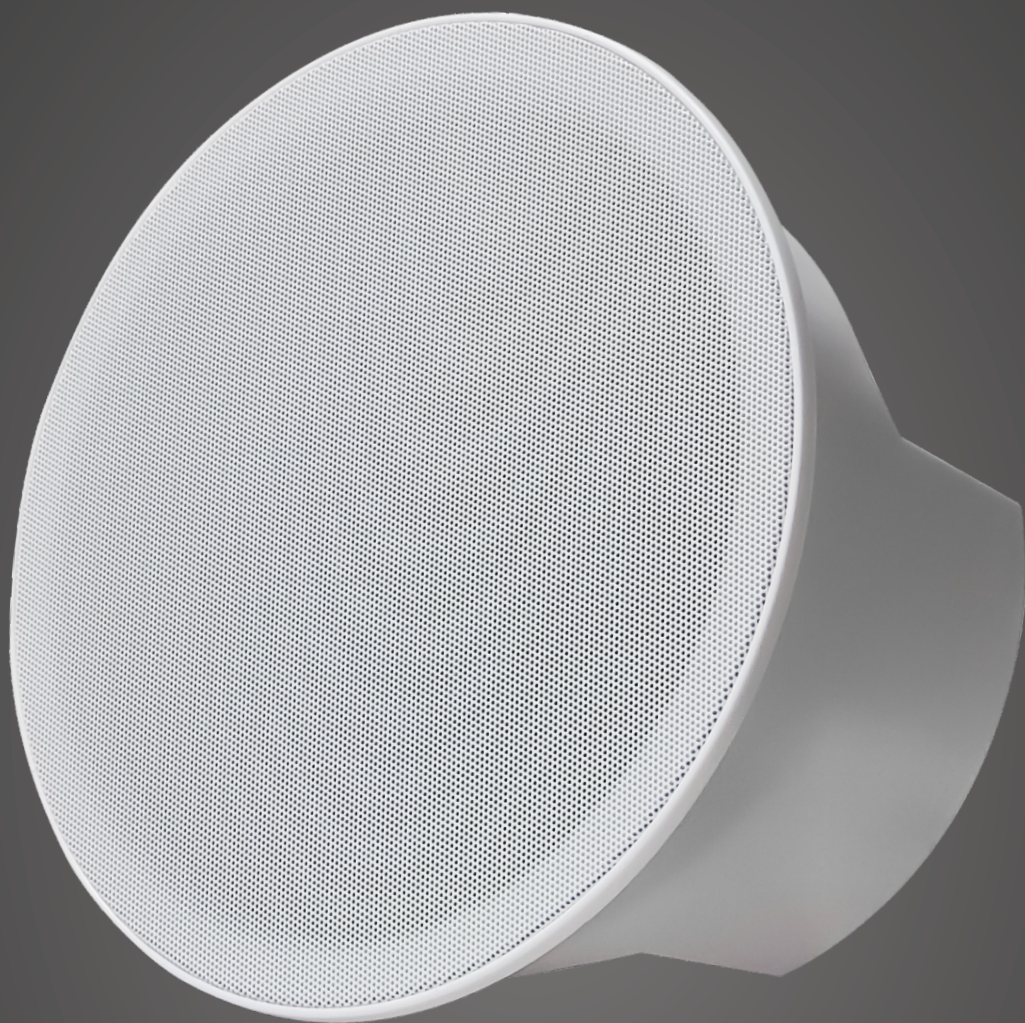


ZYCOO



EC15

Network Ceiling Speaker

Applicable Scenarios



Schools



Health Care



Shopping Centers

Train/Bus
Stations

Restaurants

Garden
Pubs

Residential



Retail Shops



Airports

Office
Buildings

Warehouses



Hotels

Features

- Built-in 15W amplifier, 300Hz to 10KHz frequency range and 118dB max sound pressure level.
- Standard PoE (IEEE 802.3af/at) support or External power supply (DC 24V 2A).
- Supports 48K OPUS high-quality audio encoding.
- Compatible with VoIP, SIP devices (IPPBX, IP Phone) via SIP.
- Compatible with IP camera VMS via ONVIF.
- Supports three lines SIP accounts, in which users may register the endpoint in more than one system for achieving different functionality purposes.
- Support HTTP API for alarm in transmit.
- Features a built-in microphone design and has an excellent sound pickup effect. When used with the external button, the two-way communication function can be easily realized.
- Can connect a 15W analog subwoofer for high-quality listening experience.

Specifications

Speaker

Speaker component	8"full-range driver unit
Sensitivity	97dB/1m/1W
Max sound pressure level	109dB
Amplifier	Class D Amplifier
Rated power	DC: 8Ω 15W or PoE: af-8Ω 8W / at-8Ω 15W
Frequency range	60Hz – 17KHz
Coverage Pattern	90°H 90°V(1kHz/-6dB), 30m ²
Acoustics	Mono

Specifications

Microphone	
Microphone	Electret condenser microphone
Directionality	Omni-directional
Installation method	Built-in
Sensitivity	-36±2dB
SNR	65dB
Maximum input sound pressure	110dB(THD≤3%)
Maximum pickup distance	Up to 10m in a 50dB noise environment
Audio	
Audio codecs	G.722, G.711 A-law, G.711 U-law, Opus
Audio streaming	MP3 sampling rate 8 – 48KHz, bit rate 64 – 320kbps, Mono or Stereo
Interface	
Interface	1x RJ45 (PoE) 1x 10-pin 3.5mm Phoenix terminal 1x DC Female interface (5.5*2.1)
Network	
Interface	10/100Mbps, support PoE IEEE 802.3af/at
Protocols	SIP(RFC3261), HTTP, TCP/IP, SSL, DNS, SNTP, NTP, RTSP, RTP, RTCP, TCP, UDP, MQTT, ICMP, DHCP, ARP, SSH
Administration	
Configuration	Web interface or auto provisioning server
Provisioning method	MQTT IoT Protocol
Mechanical Properties	
Memory	128MB RAM, 256MB Flash
Power input	PoE IEEE802.3af/at standard adaptive(af 8W / at 15W) or DC 24V-2A
Casing	ABS
Color	White
Weight	1.2KG
Dimension	Ø232 x 132 mm (9.13 x 5.20 in)
Mouning method	Cut holes in the ceiling and fix with clamps
Environmental	
Installation environment	Indoor
Operating temperature	-20°C -50°C(-4°F - 122°F)
Storage temperature	-40°C - 70°C(-40°F - 158°F)
Humidity	10% - 95% RH Non-condensing
Approvals	
Approvals	EN 55032:2015, EN 55035:2017, EN 61000-3-2:2014, EN 61000-3-3:2013, EN 62368-1:2014+A11:2017, FCC Pat 15B



zycoo@zycoo.com

www.zycoo.com

© 2025 Zycoo Communications LLC All rights reserved